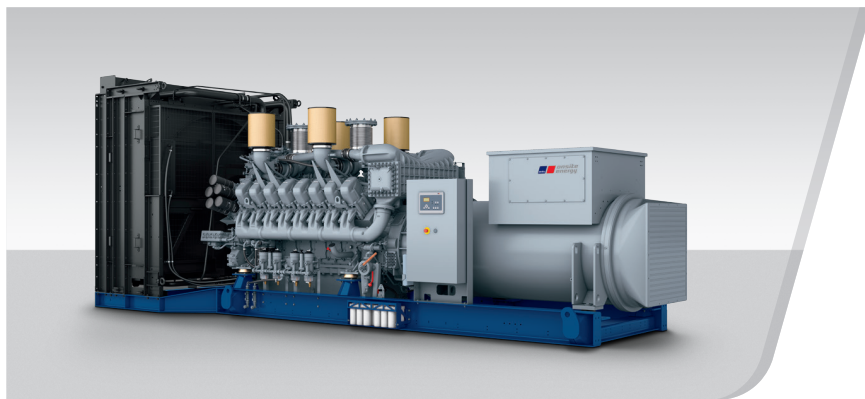


DIESEL GENERATOR SET

MTU 16V4000 DS2250

380V – 11 kV/50 Hz/Grid Stability Power/TA-Luft Optimized
MTU 16V4000G14F/Water Charge Air Cooling



Optional equipment and finishing shown. Standard may vary.

PRODUCT HIGHLIGHTS

// Benefits

- Low fuel consumption
- Optimized system integration ability
- High reliability
- High availability of power
- Long maintenance intervals

// MTU Onsite Energy is a single-source supplier

// Support

- Global product support offered

// Standards

- Engine-generator set is designed and manufactured in facilities certified to standards ISO 2008:9001 and ISO 2004:14001
- Generator set complies to ISO 8528
- Generator meets NEMA MG1, BS5000, ISO, DIN EN and IEC standards
- NFPA 110

// Power Rating

- System ratings: 2120 kVA - 2160 kVA
- Accepts rated load in one step per NFPA 110
- Generator set complies to G3 according to ISO 8528-5
- Generator set exceeds load steps according to ISO 8528-5

// Performance Assurance Certification (PAC)

- Engine-generator set tested to ISO 8528-5 for transient response
- 100% load factor
- Verified product design, quality and performance integrity
- All engine systems are prototype and factory tested

// Complete range of accessories available

- Control panel
- Power panel
- Circuit breaker/power distribution
- Fuel system
- Fuel connections with shut-off valve mounted to base frame
- Starting/charging system
- Exhaust system
- Mechanical and electrical driven radiators
- Medium and oversized voltage alternators

// Emissions

- TA-Luft optimized

// Certifications

- CE certification option
- Unit certificate acc. to BDEW (German Grid-Code)

APPLICATION DATA^①

// Engine

Manufacturer	MTU
Model	16V4000G14F
Type	4-cycle
Arrangement	16V
Displacement: l	76.3
Bore: mm	170
Stroke: mm	210
Compression ratio	16.4
Rated speed: rpm	1500
Engine governor	ECU 9
Max power: kWm	1798
Air cleaner	Dry

// Fuel System

Maximum fuel lift: m	5
Total fuel flow: l/min	20

// Fuel Consumption^②

	l/hr	g/kwh
At 100% of power rating:	472.2	218
At 75% of power rating:	346.1	213
At 50% of power rating:	234	216

// Liquid Capacity (Lubrication)

Total oil system capacity: l	300
Engine jacket water capacity: l	175
Intercooler coolant capacity: l	50

// Combustion Air Requirements

Combustion air volume: m ³ /s	3.2
Max. air intake restriction: mbar	50

// Cooling/Radiator System

Coolant flow rate (HT circuit): m ³ /h	68.5
Coolant flow rate (LT circuit): m ³ /h	30
Heat rejection to coolant: kW	790
Heat radiated to charge air cooling: kW	460
Heat radiated to ambient: kW	90
Fan power for electr. radiator (40°C): kW	70

// Exhaust System

Exhaust gas temp. (after turbocharger): °C	480
Exhaust gas volume: m ³ /s	7.4
Maximum allowable back pressure: mbar	85
Minimum allowable back pressure: mbar	30

① All data refers only to the engine and is based on ISO standard conditions (25°C and 100m above sea level).

② Values referenced are in accordance with ISO 3046-1. Conversion calculated with fuel density of 0.83 g/ml.
All fuel consumption values refer to rated engine power.

STANDARD AND OPTIONAL FEATURES

// System Ratings (kW/kVA)

Generator model	Voltage	TA-Luft optimized					
		without radiator			with mechanical radiator		
		kWeI	kVA*	AMPS	kWeI	kVA*	AMPS
Leroy Somer LSA52.3 S7	380 V	1728	2160	3282	1656	2070	3145
(Low voltage	400 V	1728	2160	3118	1656	2070	2988
Leroy Somer standard)	415 V	1728	2160	3005	1656	2070	2880
Marathon 744RSL7092	380 V	1704	2130	3236	1640	2050	3115
(Low voltage Marathon)	400 V	1704	2130	3074	1640	2050	2959
	415 V	1696	2120	2949	1640	2050	2852
Marathon 1020FDL7093	380 V	1704	2130	3236	1640	2050	3115
(Low voltage	400 V	1704	2130	3074	1640	2050	2959
Marathon oversized)	415 V	1696	2120	2949	1640	2050	2852
Marathon 1020FDH7097	11 kV	1712	2140	112	1640	2050	108
(Medium volt. marathon)							
Leroy Somer LSA53.2 XL9	11 kV	1728	2160	113	1656	2070	109
(Medium volt. Leroy Somer)							

* $\cos \phi = 0,8$

// Engine

- 4-Cycle
- Standard single stage air filter
- Oil drain extension & shut-off valve
- Closed crankcase ventilation with improved oil separator
- Governor-electronic isochronous
- Common rail fuel injection
- TA-Luft optimized engine
- Centrifugal oil filter

// Generator

- 4 pole three-phase synchronous generator
- Brushless, self-excited, self-regulating, self-ventilated
- Digital voltage regulator
- Anti condensation heater
- Stator winding Y-connected, accessible neutral (brought out)
- Protection IP23
- Insulation class H, utilization acc. to H
- Radio suppression EN55011, group 1, cl. B
- Short circuit capability 3xIn for 10sec
- Winding and bearing RTDs (without monitoring)
- Excitation by AREP
- Mounting of CT's: 2 core CT's
- Winding pitch: 2/3 winding
- Voltage setpoint adjustment $\pm 10\%$
- Meets NEMA MG-1, BS 5000, IEC 60034-1, VDE 0530, DIN EN 12601, AS1359 and ISO 8528 requirements
- Leroy Somer low voltage generator
- Marathon low voltage generator
- Oversized generator
- Medium voltage generator

■ Represents standard features

□ Represents optional features

STANDARD AND OPTIONAL FEATURES, CONTINUATION

// Cooling System

- | | |
|--------------------------------------------------------------|-------------------------------------------------------------|
| <input checked="" type="checkbox"/> Jacket water pump | <input type="checkbox"/> Mechanical radiator |
| <input checked="" type="checkbox"/> Thermostat(s) | <input type="checkbox"/> Electrical driven front-end cooler |
| <input checked="" type="checkbox"/> Water charge air cooling | <input type="checkbox"/> Jacket water heater |

// Control Panel

- | | | |
|---------------------------------------------------------------------------------------------------------------------------|-------------------------------------------------------------------------------------|-------------------------------------------------------------------|
| <input checked="" type="checkbox"/> Pre-wired control cabinet for easy application of customized controller (V1+) | <input type="checkbox"/> Basler controller | <input type="checkbox"/> Different expansion modules |
| <input type="checkbox"/> Island operation (V2) | <input type="checkbox"/> Deif controller | <input type="checkbox"/> Remote annunciator |
| <input type="checkbox"/> Automatic mains failure operation with ATS (V3a) | <input checked="" type="checkbox"/> Complete system metering | <input type="checkbox"/> Daytank control |
| <input type="checkbox"/> Automatic mains failure operation incl. control of generator and mains breaker (V3b) | <input checked="" type="checkbox"/> Digital metering | <input type="checkbox"/> Generator winding temperature monitoring |
| <input type="checkbox"/> Island parallel operation of multiple gensets (V4) | <input checked="" type="checkbox"/> Engine parameters | <input type="checkbox"/> Generator bearing temperature monitoring |
| <input type="checkbox"/> Automatic mains failure operation with short (< 10s) mains parallel overlap synchronization (V5) | <input checked="" type="checkbox"/> Generator Protection Functions | <input type="checkbox"/> Modbus TCP-IP |
| <input type="checkbox"/> Mains parallel operation of a single genset (V6) | <input checked="" type="checkbox"/> Engine protection | |
| <input type="checkbox"/> Mains parallel operation of multiple gensets (V7) | <input checked="" type="checkbox"/> SAE J1939 engine ECU communications | |
| | <input checked="" type="checkbox"/> Parametrization software | |
| | <input checked="" type="checkbox"/> Multilingual capability | |
| | <input checked="" type="checkbox"/> Multiple programmable contact inputs | |
| | <input checked="" type="checkbox"/> Multiple contact outputs | |
| | <input checked="" type="checkbox"/> Event recording | |
| | <input checked="" type="checkbox"/> IP 54 front panel rating with integrated gasket | |

// Power Panel

- | | | |
|------------------------------------------------------------|---------------------------------------------------------------------------|-------------------------------------------------------------------------------------------|
| <input type="checkbox"/> Available in 600x600 and 600x1000 | <input type="checkbox"/> Supply for anti condensation heating | <input type="checkbox"/> Supply electrical driven radiator from 45kW – 75kW (PP 600x1000) |
| <input type="checkbox"/> Phase monitoring relay 230V/400V | <input type="checkbox"/> Plug socket cabinet for 230V compatible Euro/USA | |
| <input type="checkbox"/> Supply for battery charger | | |
| <input type="checkbox"/> Supply for jacket water heater | | |

// Circuit Breaker/Power Distribution

- | | | |
|-------------------------------------------------|--------------------------------------------------------------|-------------------------------------------------------------------|
| <input type="checkbox"/> 3-pole circuit breaker | <input type="checkbox"/> Manual-actuated circuit breaker | <input type="checkbox"/> Stand-alone solution in separate cabinet |
| <input type="checkbox"/> 4-pole circuit breaker | <input type="checkbox"/> Electrical-actuated circuit breaker | |

STANDARD AND OPTIONAL FEATURES, CONTINUATION

// Fuel System

- | | | |
|------------------------------------------------------------------------------------|---------------------------------------------------------------------------------|------------------------------------------------------------------------|
| <input checked="" type="checkbox"/> Flexible fuel connectors mounted to base frame | <input type="checkbox"/> Switchable fuel filter with water separator | <input type="checkbox"/> Fuel cooler integrated into cooling equipment |
| <input type="checkbox"/> Fuel filter with water separator | <input type="checkbox"/> Switchable fuel filter with water separator heavy-duty | |
| <input type="checkbox"/> Fuel filter with water separator heavy-duty | <input type="checkbox"/> Seperate fuel cooler | |

// Starting/Charging System

- | | | |
|-------------------------------------------------|-----------------------------------------------------------------------------|------------------------------------------|
| <input checked="" type="checkbox"/> 24V starter | <input type="checkbox"/> Starter batteries, cables, rack, disconnect switch | <input type="checkbox"/> Battery charger |
|-------------------------------------------------|-----------------------------------------------------------------------------|------------------------------------------|

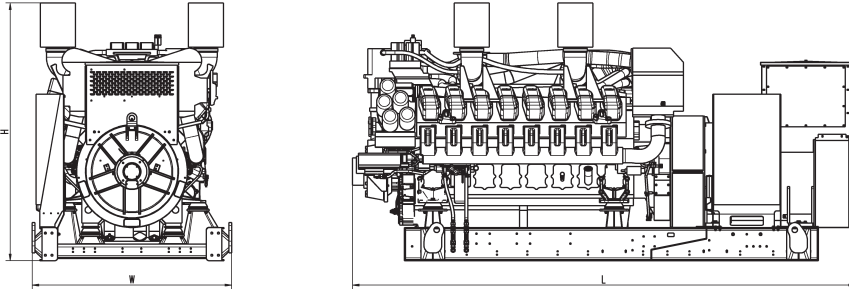
// Mounting System

- | | | |
|-------------------------------------------------------|-----------------------------------------------------------------------------|---------------------------------------------------------------|
| <input checked="" type="checkbox"/> Welded base frame | <input checked="" type="checkbox"/> Resilient engine and generator mounting | <input checked="" type="checkbox"/> Modular base frame design |
|-------------------------------------------------------|-----------------------------------------------------------------------------|---------------------------------------------------------------|

// Exhaust System

- | | | |
|---------------------------------------------------------------------------|---------------------------------------------------------------------------|--------------------------------------------|
| <input type="checkbox"/> Exhaust bellows with connection flange | <input type="checkbox"/> Exhaust silencer with 30 dB(A) sound attenuation | <input type="checkbox"/> Y-connection-pipe |
| <input type="checkbox"/> Exhaust silencer with 10 dB(A) sound attenuation | <input type="checkbox"/> Exhaust silencer with 40 dB(A) sound attenuation | |

WEIGHTS AND DIMENSIONS



Drawing above for illustration purposes only, based on a standard open power 400 Volt engine-generator set. Lengths may vary with other voltages. Do not use for installation design. See website for unit specific template drawings.

System

Open Power Unit (OPU)

Dimensions (L x W x H)

4766 x 1810 x 2330 mm

Weight (dry/less tank)

12428 kg

Weights and dimensions are based on open power units and are estimates only. Consult the factory for accurate weights and dimensions for your specific engine-generator set.

SOUND DATA

// Consult your local MTU Onsite Energy distributor for sound data.

EMISSIONS DATA

NO_x + NMHC

1700

CO

300

PM

50

All units are in mg/Nm³

Emission levels of the engine may vary as a function of ambient temperature, barometric pressure, humidity, fuel type and quality, installation parameters, measuring instrumentation, etc. The data provided refers to ISO standard ambient conditions (25°C and 100m above sea level). The data provided are laboratory results from one engine representing this rating. The data was obtained under controlled environmental conditions with calibrated instrumentation.

RATING DEFINITIONS AND CONDITIONS

// Grid Stability Power ratings apply to installations serving electric utility programs. At constant or varying load, the number of generator set operating hours is limited to 1000 hours per year with no more than 500 hours per year at 100% load without interruption. A 10% overload capacity is available for one hour in twelve. Ratings are in accordance with ISO 8528-1, ISO 3046-1, BS 5514 and AS 2789. Average load factor: ≤ 100%.

// Consult your local MTU Onsite Energy Power Generation Distributor for derating information.

Materials and specifications subject to change without notice.

MTU Onsite Energy

Part of the Rolls-Royce Group

www.mtuonsiteenergy.com